

kamPa

YUEQING KAMPA ELECTRIC CO.,LTD

Address : NO. 396, Chezhan Road, Liushi Town, Yueqing , Zhejiang, China.

P.C:325604

Mobile/Whatsapp/Wechat: 0086 13757786841

TEL: 0577-62729846

Website :www.China-kampa.com

E-mail: sales@elexpert.cn

KamPa

Company Profile

Yueqing Kampa electric co.,ltd established in 2009, it has more than 23years' experience in electric&electronic field. We have got the ISO9001,... 14000,18000. Most of products have pass the CE,BV,UL etc.

Kampa development History as below:

2009, Kampa started with Relay, timer/time switch, Solid State relay, photoelectric &proximity sensor, temperature controller and thermocouple.

2010, Kampa creat NONARC, which mainly produce AC contactor, Circuit breaker and distribution box.

2013, Kampa invest on developing and producing TV guard, Fridge guard, Voltage protector and mechanical thermostat.

2015-2019, Kampa expand the high voltage electric product into our product range, such as Medium voltage transformer, Vacuum circuit breaker, Disconnecter switch

2020-, Kampa add the high voltage soft starter and VFD into our product range..

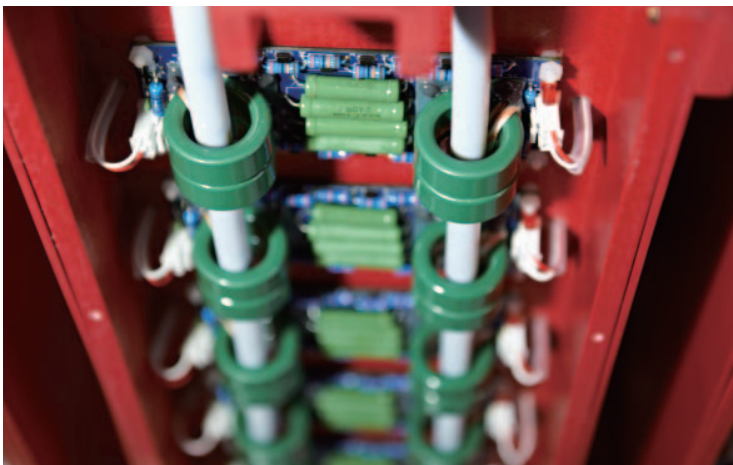
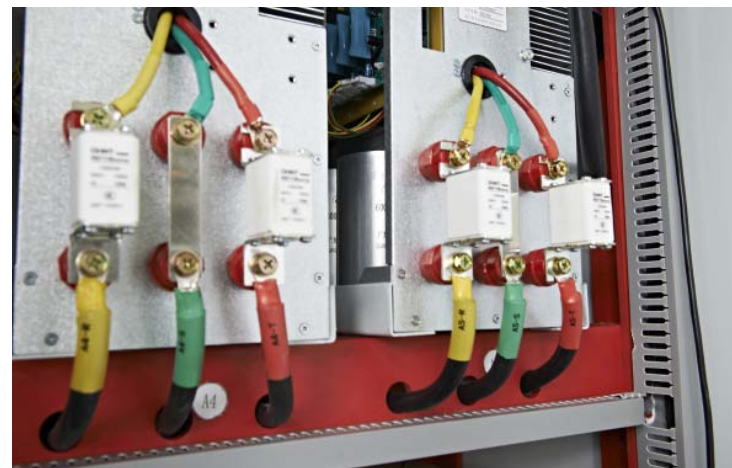
we insist on the idea of scientific & technological innovation and intelligent manufacturing development . Bring in senior technical talents, comprehensively improve our core competitiveness and provide customers with the most valuable service. we strive to create the most outstanding brand in the industry.

We uphold the business principle that “ customers first, service foremost, take innovation as forerunner,depend on technology strength ” .we sincerely look forward to cooperate with you to integrate the wisdom and seek common development



Committed to providing customers
Cleaner, smarter, more efficient
power quality optimization solution

.....



Application Fields



Electricity

Induced draft fan, blower, primary fan, secondary fan, feed water pump, circulating water pump, condensate pump, mortar pump, etc.



Mine

Main and auxiliary shaft hoist, main fan, pressure fan, extraction fan, air Compressor, gas drainage pump, medium pump, drainage pump, belt machine, roller Press, etc.



Petroleum And Natural Gas

Oil pumping pump, water injection pump, submersible electric pump, LNG pressure pump, etc.



Metallurgy

Sintering spindle fan, blast furnace blower, dust blower, sulfur dioxide drumFan, ring air cooler, combustion fan, circulating water pump, slag pump, except Phosphorus pump, chemical liquid pump, pulp pump, rolling mill, etc



Cement

High temperature fan, kiln head exhaust fan, kiln tail exhaust fan, coal mill circulating fan, raw material grinding circulating fan, cement grinding circulating fan, ball mill, etc.



Public Works

Clean water pump, sewage pump, purification pump, mixed flow pump, feed blower, etc.



Chemical Industry

Dust removal fan, gas blower, Roots fan, desulfurization fan, gas compressor (nitrogen, carbon dioxide, ammonia, etc.), circulating water pump, etc.



Other

Pharmaceutical paper industry fan, water pump, etc. Sugar industry feeder, press, etc. rubber industry mixer and so on.

Catalogue



KPMV

High voltage solid soft starter device

01



KPHV

High voltage frequency converter

05



KPTBBZ(6~35)

High voltage automatic reactive power compensation complete device

09



KP-XHG

Arc extinction cabinet

13



KP-APF/SVG

Active power filter

17

KPMV

High voltage solid soft starter device



KPMV-- High voltage solid soft stater device

Product Overview

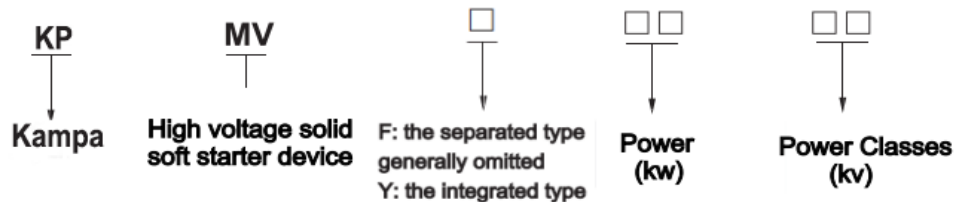
KPMV series high voltage solid state soft starter device is the latest generation of perfect, reliable and convenient maintenance of high-tech products. It is mainly used for starting and stopping control and protection of squirrel cage asynchronous synchronous starter. The device adopts a number of thyristor series and connected, can meet the current and voltage requirements .

they are widely used in rated voltage 3000-10000V power ,building materials ,chemical, metallurgy steel , paper making and other industries .it is the ideal high voltage motor starting and protection equipment for mercury water,blower compressor, grinder mixer,Pitty machine and other mechanical equipment.

Device Introduction

High voltage soft starter is a new intelligent motor starter, it is suitable for squirrel-cage asynchronous and synchronous motors. It is a Integrated motor terminal control equipment of starter, display, Protection, data collection . Users can achieve more complex control functions by using fewer components. The high-voltage soft starter controls the input voltage through the conduction Angle between the control items in order to change the voltage value at he starter end of a motor, that is, control the starting torque and starting current of the motor to realize the motor soft start control. High voltage soft starter can accelerate smoothly according to the set starting parameters, thus reducing the electrical and mechanical impact on the power grid, motor and equipment. When the motor reaches the rated speed, the bypass contactor is switched on automatically. The high voltage soft starter continues to monitor the motor after starting and provides various fault protection.

Model Instruction



Technical characteristics

Component composition : High voltage SCR module, SCR protection component, optical fiber trigger component, vacuum switch component, signal acquisition and protection component, system control and display component.

SCR module: SCR modules with the same parameters in each phase are installed in series and parallel.

SCR protection components: mainly including RC network composed of overvoltage absorption network, composed by the voltage sharing unit of voltage sharing protection network.

Fiber trigger components: Use strong trigger pulse circuit, to ensure the trigger consistency and reliability, using fiber optic trigger to Realize high and low voltage isolation .

Vacuum switch component: after starting, three-phase vacuum bypass contactor automatically pulls in . the motor is working into power grid operation.

Signal acquisition & protection components: the voltage transformer, current transformer, lightning arrester collect main circuit voltage, current signal acquisition, the main CPU control and make corresponding protection.

System control and display components: 32-bit ARM core microcontroller execution center control. LCD/touch screen display, can display three-phase voltage, Current, information, running status, etc.

Cabinet structure adopts KYN28 high voltage switch cabinet body, the main structure adopts 2mm aluminum-zinc steel plate compound folding process, cabinet door adopts 2mm cold rolled steel plate compound folding process, cabinet door adopts electrostatic spraying process, with the characteristics of im act resistance corrosion resistance and beautiful a earance. The protection level is IP40.

Functional features

A variety of starting ways;

Starting control: the machine is equipped with local, remote (external dry contact), PLC. Communication (485 interface. Modbus) signalling control function.

Soft start/direct start with conversion function;

Thyristor protection: resistance and capacitance absorption dynamic and static voltage sharing technology, to ensure the reliable and safe operation of power devices in series under high voltage

Strong anti-interference

Modular design

Communication interface: RS-485 communication interface, embedded standard MODBUS protocol, convenient configuration connection

Analog signal output: 4-20mA signal

Memory of 15 failures

Advanced and perfect start and stop function

High reliability, High security, Practical.

Technical Parameters

Basic Parameters Sheet

| | |
|---------------------------------------|---|
| The Load Type | Three-phase high voltage squirrel cage asynchronous motor, synchronous motor |
| Rated Voltage | 3000--10000VAC |
| Working Frequency | 50Hz |
| Phase Sequence | Allowed to work in any phase sequence (phase sequence detection can be set by parameter) |
| Main Loop Composition | 12SCRS、 18SCRS、 30SCRS (Depending on the model and rated voltage) |
| Bypass Contactor | Contactors with direct starting capacity |
| Control Power | AC220V±15% |
| Transient voltage overload protection | dv/dt Absorption of protection |
| Starter per hour | No more than 3 starting times per hour |
| Environmental conditions | : -10°C -±50°C |
| | relative humidity : 5% -95% Without condensation |
| | Capacity reduction is required when the altitude exceeds 1500 meters |
| Protection Parameters | |
| open-phase protection | Disconnect any phase of the main power supply during startup or operation |
| Working overcurrent protection | Run overcurrent protection Settings : 20~500% |
| Phase current imbalance protection | Phase current imbalance protection : 0~100% |
| overload protection | Overload protection level : 10A、 10、 15、 20、 25、 30 |
| Underload protection | Overload protection level : 10A、 10、 15、 20、 25、 30 |
| overtime of Starting | limitation of Starting time : 0~120S |
| Phase Sequence Protection | Allows to work in any phase sequence (can be set by parameter) |
| Ground protection | Protection when grounding current is bigger than the set value |
| Communication Description | |
| Communication Agreement | Modbus RTU |
| Communication Connector | RS485 |
| Network Connection | Each RZMV can communicate with 30 RZMV devices on the network |
| Function | Through the communication interface, you can observe the running status and program |
| Operation Interface | |
| LCD display (optional contact screen) | LCD liquid crystal display (optional touch screen display) |
|) language | Chinese , English |
| keyboard | 6 touch film buttons |
| Instrument display system | |
| Master Power Supply | Display three-phase main voltage |
| Three Phase Current | Display three-phase main loop current |
| Data Record | |
| Error Record | Record the latest 15 faults |
| Starting Times | Record the starting times of the device |

KPMV-High voltage solid soft stater device

Technical Parameter

| Voltage Parameter | Power (kW) Size | Size | Rated Current (A) | W (mm) | H (mm) | D (mm) | | | |
|-------------------|-----------------|---------------|-------------------|------------|--------|--------|------------|--|--|
| 3kV | 400 | KPMV-400-3 | 100 | 1000 | 2300 | 1500 | | | |
| | 630 | KPMV-630-3 | 150 | | | | | | |
| | 1600 | KPMV-1600-3 | 400 | 1150 | 2300 | 1500 | | | |
| | 2500 | KPMV-2500-3 | 600 | Customized | | | | | |
| 6kV | 420 | KPMV-420-6 | 50 | 1000 | 2300 | 1500 | | | |
| | 630 | KPMV-630-6 | 75 | | | | | | |
| | 1250 | KPMV-1250-6 | 150 | | | | | | |
| | 1600 | KPMV-1600-6 | 200 | 1000 | 2300 | 1500 | | | |
| | 2500 | KPMV-2500-6 | 300 | | | | | | |
| | 3300 | KPMV-3300-6 | 400 | | | | | | |
| | 4150 | KPMV-4150-6 | 500 | | | | | | |
| | 5000 | KPMV-5000-6 | 600 | Customized | | | | | |
| 10kV | 420 | KPMV-420-10 | 30 | 800 | 2300 | 1500 | | | |
| | 630 | KPMV-630-10 | 45 | | | | | | |
| | 800 | KPMV-800-10 | 60 | | | | | | |
| | 1250 | KPMV-1250-10 | 90 | | | | | | |
| | 1500 | KPMV-1500-10 | 110 | | | | | | |
| | 1800 | KPMV-1800-10 | 130 | | | | | | |
| | 2250 | KPMV-2250-10 | 160 | | | | | | |
| | 2500 | KPMV-2500-10 | 180 | | | | | | |
| | 2800 | KPMV-2800-10 | 200 | 1000 | 2300 | 1500 | | | |
| | 3500 | KPMV-3500-10 | 250 | | | | | | |
| | 4000 | KPMV-4000-10 | 280 | | | | | | |
| | 4500 | KPMV-4500-10 | 320 | | | | | | |
| | 5500 | KPMV-5500-10 | 400 | | | | | | |
| | 6000 | KPMV-6000-10 | 430 | | | | | | |
| | 7000 | KPMV-7000-10 | 500 | | | | | | |
| | 8500 | KPMV-8500-10 | 600 | | | | | | |
| | 10000 | KPMV-10000-10 | 720 | | | | Customized | | |
| | 15000 | KPMV-15000-10 | 1080 | | | | | | |